



COLORTEK®

NEOCEMENT  
**CONCRETE EFFECT**

Wall & Floor  
Seamless Concrete Finish











# NEOCEMENT®

## NEO-INDUSTRIAL CHIC

Neocement® is seamless, joint free, decorative finish specifically designed for application on interior or exterior walls and floors.

Applied by hand at reduced thicknesses, Neocement® finishes are real work of craftsmanship that can be personalized to your own style by playing with color schemes and intensity, texture effects or even stencils and stamping to give any space its own unique character, making it perfect to add depth, harmony and simple sophistication to private homes, businesses, showrooms, restaurants, stores or even shopping centers.

# INNOVATIVE & GREEN DESIGN MATERIAL

Neocement® is part of the new generation of smart decorative products meant to transform your space with minimal environmental impact.

Due to its natural ingredients composition that blends cement and water-based polymers, which have very low volatile organic compounds (VOC's), Neocement® has a minimal impact on the environment and meets sustainable architectural requirements for adaptability, transformation and change of any surface (concrete, ceramics, wood, plasterboard, masonry walls, staircases, bathtubs, showers, etc.) at a much lower cost than removal and replacement.







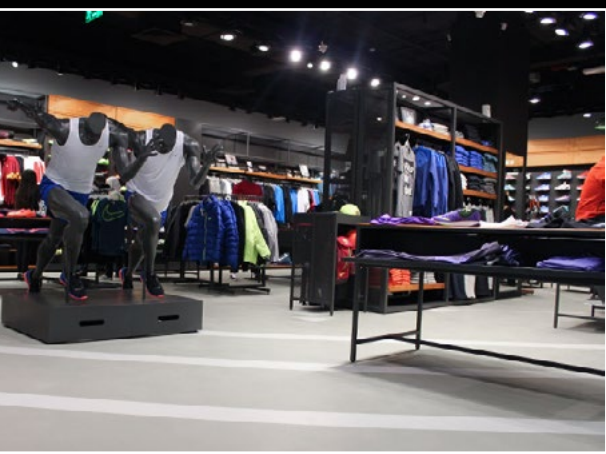




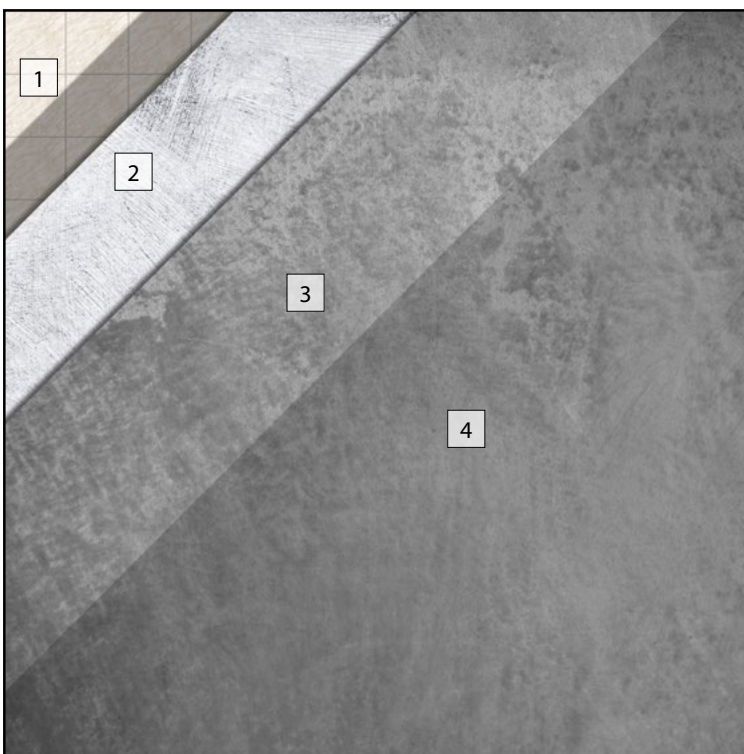
# UTILITY, DURABILITY & HIGH-PERFORMANCE

With only a thickness of 3 millimeters, Neocement® can be applied both on horizontal and vertical surfaces, indoors and outdoors and even on objects such as furniture, allowing you to give free rein to your creativity without constraints or limitations.

Extraordinary adhesion, high abrasion and compression resistance, as well as UV and water resistance properties make this product an ideal choice to renovate any type of surface exposed to atmospheric agent, while reducing to a minimum dust, rubble and all other waste from normal restoration works.







#### 1. PRIMING

Apply SX0 PrimeWell or SX9 HumiGuard to consolidate the surface.

#### 2. BASE COAT

Apply Neofiller in two coats. Once the second coat has dried, sand the surface and remove the dust.

#### 3. NEOCEMENT COAT

Apply first Neocement Coat; (Mix all 3 components until obtaining a relatively pasty mortar with good sag resistance). Once the coat has dried, apply second Neocement coat, wait for it to dry and sand the surface with a 150 or 220 grid before removing the dust.

#### 4. PROTECTIVE COAT

Apply the desired protective topcoat depending on the intended use of the surface and its location. Refer to the intended use table of the brochure and technical data sheet for additional details.

#### NOTICE

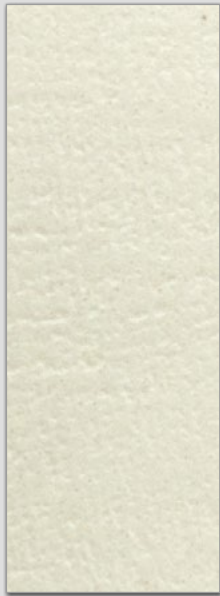
SX0 and SX9 must be used with absorbent substrates. Supports with low absorption (i.e. glazed tiles or marble), should be etched and prepaed accordingly.

# 3 MM NEOCEMENT<sup>®</sup> APPLICATION SYSTEM

## INTENDED USE – PROTECTIVE TOP COAT SELECTION

CONDITIONS		VERTICAL SURFACE	HORIZONTAL LIGHT TRAFFIC RESIDENTIAL	HORIZONTAL MEDIUM TRAFFIC COMMERCIAL	HORIZONTAL HEAVY TRAFFIC INDUSTRIAL
INTERIOR	Dry conditions	Colortek Wax, Aqua Wax, Colortek 4005, Polylock	Polylock	Polylock	Neofiller (3 coats) + Polylock
	Humid conditions	Colortek 4005 Polylock (2 coats)	Polylock (2 coats)	Polylock (2 coats)	Neofiller (3 coats) + Polylock (2 coats)
	Submerged conditions	Oxibond 4900*	Oxibond 4900*	Oxibond 4900*	Neofiller (3 coats) + Oxibond 4900*
EXTERIOR	Dry conditions	Colortek 4005 Polylock	Polylock	Polylock	Neofiller (3 coats) + Polylock
	Humid conditions	Colortek 4005 Polylock (2 coats)	Polylock (2 coats)	Polylock (2 coats)	Neofiller (3 coats) + Polylock (2 coats)
	Submerged conditions	Oxibond 4900*	Oxibond 4900*	Oxibond 4900*	Neofiller (3 coats) + Oxibond 4900*

\* Oxibond 4900 has a glossy finish. If a flat finish is required, apply a final coat of Oxibond 4900 Topcoat .



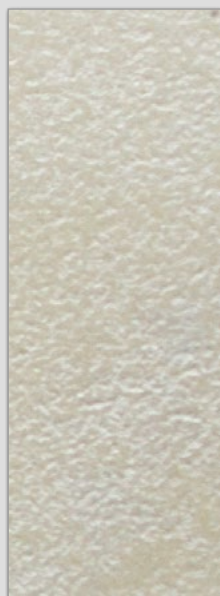
200/00 Castle White



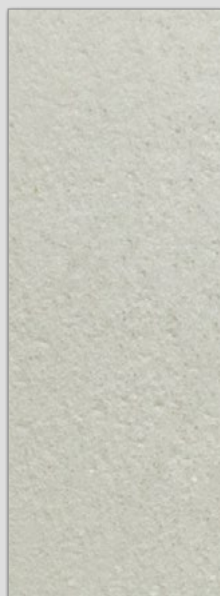
200/00 Castle White  
+ Metallo R Silver



200/05 Sandstone



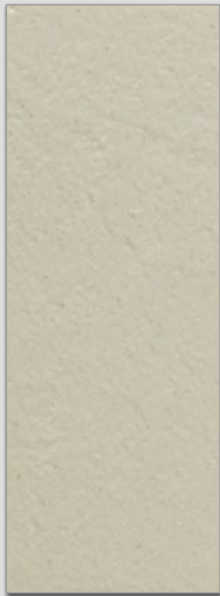
200/05 Sandstone  
+ Metallo R Silver



200/12 Minerals



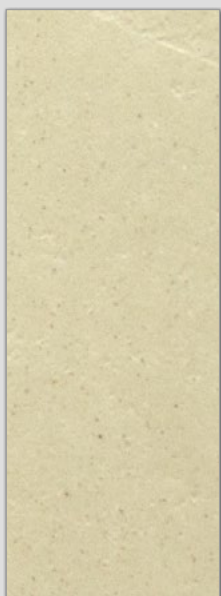
200/12 Minerals  
+ Metallo R Silver



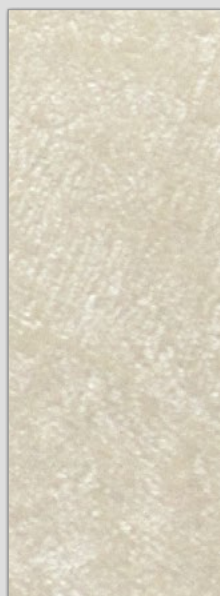
200/32 Porcelain



200/32 Porcelain  
+ Metallo R Silver



200/39 Old Linen



200/39 Old Linen  
+ Metallo R Silver



200/43 Shadow



200/43 Shadow  
+ Metallo R Silver



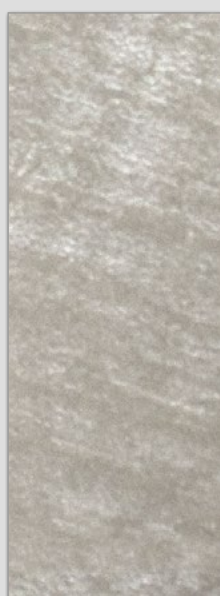
200/61 Calm



200/61 Calm  
+ Metallo R Silver



200/76 Milestone



200/76 Milestone  
+ Metallo R Silver



200/77 Blunt



200/77 Blunt  
+ Metallo R Silver

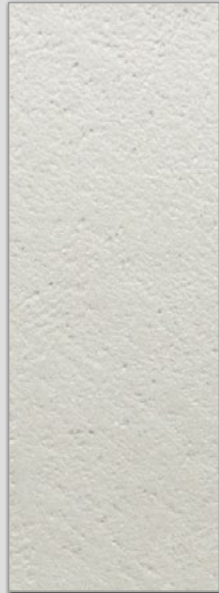
Actual sample colors may vary. Printing processes and monitors have different capabilities when displaying colors. We try to edit our photos to show the samples as life-like as possible, but we cannot guarantee that the color you see accurately portrays the true color of the product. Please request a physical sample from your local Colortek® shop.



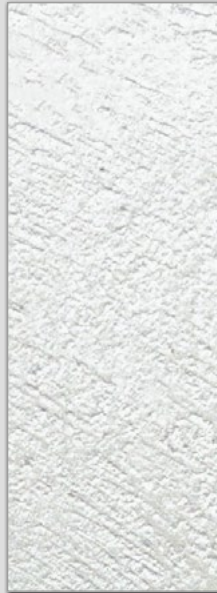
200/21 Opal



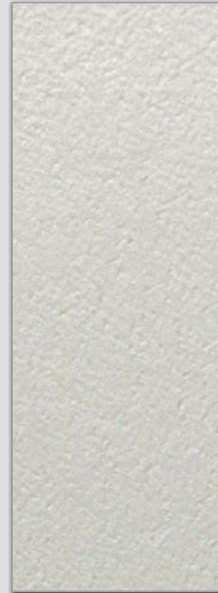
200/21 Opal + Metallo R Silver



200/26 Steel Grey



200/26 Steel Grey + Metallo R Silver



200/92 Ciment



200/92 Ciment + Metallo R Silver



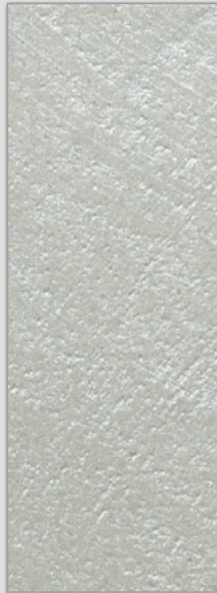
200/09 Smoke Ring



200/09 Smoke Ring + Metallo R Silver



200/03 Pewter



200/03 Pewter + Metallo R Silver



200/55 Chalk Grey



200/55 Chalk Grey + Metallo R Silver



200/13 Morion



200/13 Morion + Metallo R Silver



200/88 Carbon



200/88 Carbon + Metallo R Silver



200/38 Black Tie



200/38 Black Tie + Metallo R Silver

# NEOCEMENT<sup>®</sup> TEST RESULTS

TEST	FEATURE	NORM	RESULT
	Indoor Air Quality	UNI EN ISO 16000-9:2006	A+ For Low VOC Emissions
	Thermal Resistance And Thermal Conductivity	ASTM E1530-11	$\lambda = 0,46$ (W/mK)
	Fire Reaction	UNE-EN ISO 1716:2011 UNE-EN ISO 9239-1:2011	A2fl-s1
	Resistance To Chemicals	ASTM D 3260 ASTM D 1308	No alteration & no reduction of Shore
	Water Vapor Permeability	BS2782	203 g/m <sup>2</sup> in 24 hours
	Water Absorption	DIN 52617	0,076 kg/m <sup>2</sup> X h <sup>0,5</sup>
	Adhesion	ASTM D4541	>2 MPa, exceeding FeRFA limits for excellent flooring adhesion
	Abrasion Resistance	ASTM D4060	500 cycles/mil with 1 Kg load using CS-17
	Resistance To Impact	ASTM D2794	Sample intact after collision >1.4m For 1kg ball >0.7m For 2kg ball
	Surface Hardness	ASTM 2240	Shore D >75
	Slip Resistance	ASTM C1028 DIN 51130:2004	SRV >70 R12 for Good Slip Resistance







# NEOCEMENT®

## QUESTIONS & ANSWERS

### HOW DURABLE IS NEOCEMENT®?

Applied properly and protected by the adequate topcoat for the intended use, Neocement® should last indefinitely.

### IS NEOCEMENT® DIFFICULT TO APPLY?

Although Neocement® can be applied on almost any surface, proper surface preparation is critical. Fixing cracks, waterproofing problems and testing for excessive moisture rising up through the substrate is necessary and should be done by an expert contractor.

### IS NEOCEMENT® SUITABLE FOR EXTERIOR APPLICATIONS?

Neocement® can be used in external applications such as terraces, porches and walls. Its formulation and protective coating options provide it with good resistance from water penetration, climatic stress and UV rays.

### IS NEOCEMENT® SUITABLE FOR COMMERCIAL & RESIDENTIAL SPACES?

Neocement® is a versatile decorative finish with high resistance to wear and tear suitable for any field of interior design.

### IS NEOCEMENT® SUITABLE FOR WET AREAS?

Neocement® can be in wet areas. It is the ideal renovation choice for existing bathrooms as it can be applied over any type of surface, rendering the removal of old wall and floor tiles unnecessary.

### IS NEOCEMENT STAIN RESISTANT?

Neocement® comes with a range of sealers that meet the requirements of daily life. As long as the liquid is not left stagnant and is quickly eliminated, the properties of Neocement® combined with the protective coating can protect the flooring from spilled liquids.

### CAN WE CUSTOMIZE NEOCEMENT® WITH DIFFERENT FINISHES, TEXTURES & COLORS?

Neocement® can be tinted to any color. It is also possible to create different effects or patterns through the use of decorative inserts to form unique, personalized finishes.

### CAN NEOCEMENT® BE USED WITH UNDERFLOOR HEATING SYSTEMS?

Yes, Neocement® can be used with floor heating systems.

### CAN NEOCEMENT® BE APPLIED ON TERRAZZO?

When applying on Terrazzo, we recommend the application of an additional coat of Neofiller. Terrazzo tiles come in a wide variety and differ greatly in their material composition with some highly prone to humidity permeability. Neofiller being a highly efficient humidity blocker, the additional coat will help in preventing surfacing humidity.

### CAN NEOCEMENT® BE APPLIED ON CERAMIC TILES?

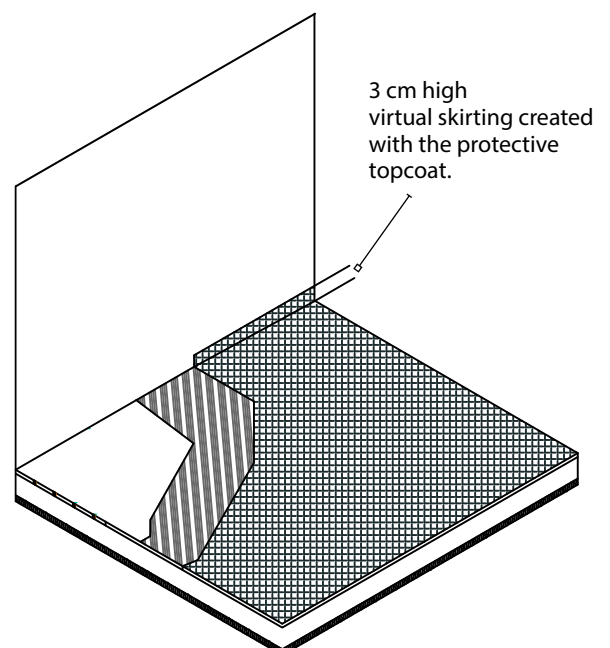
Ceramic tiles should be slightly sanded to promote adherence and when applying on ceramic tiles, it is important to remove or block the joint tiles with Colortek Epoxy Joint filler SX2 FillWell. Ceramic tiles joints are traditionally filled with cement-based tiling grout which is prone to letting humidity pass and the Epoxy based SX2 with an additional coat of Neofiller will prevent the ghosting effect.

### HOW TO AVOID WATER FILTRATION WHEN CLEANING?

When applying Neocement® it is important to apply it flush to the wall and to create a virtual skirting that impedes water filtration underneath the decorative coat by applying the protective sealer up to 3 cm vertically.

### WHAT IS THE DIFFERENCE BETWEEN SX0 AND SX9?

Colortek SX9 has additional humidity blocking and grip properties which can help preventing surfacing humidity while providing additional grip to subsequent layers of the Neocement® system.



# NEOCEMENT<sup>®</sup>

## GENERAL MAINTENANCE

### General Maintenance

Some elementary precautions and regular care can keep your Neocement Floor in good condition and extend the decorative appearance and life expectancy of any Colortek<sup>®</sup> Flooring System.

Before commencing the clean of your new floor you should sweep the area to remove any loose debris using a soft pad mop or a floor scrubber cleaner in combination with protective products based on self-polishing waxes dispersed in water.

### If the floor is to be washed

- Sweep or vacuum the floor to remove dust and debris using a soft bristle broom or vacuum cleaner.
- Dilute a PH neutral detergent in clean water. Apply the solution to the floor, using a soft-medium pad.
- It is important that all detergent residue is removed from the surface of the floor, because detergent can become slippery, which affects safety, or may remain sticky which attracts and holds more dirt.
- Periodically treat the surface with protective products based on self-polishing waxes dispersed in water.

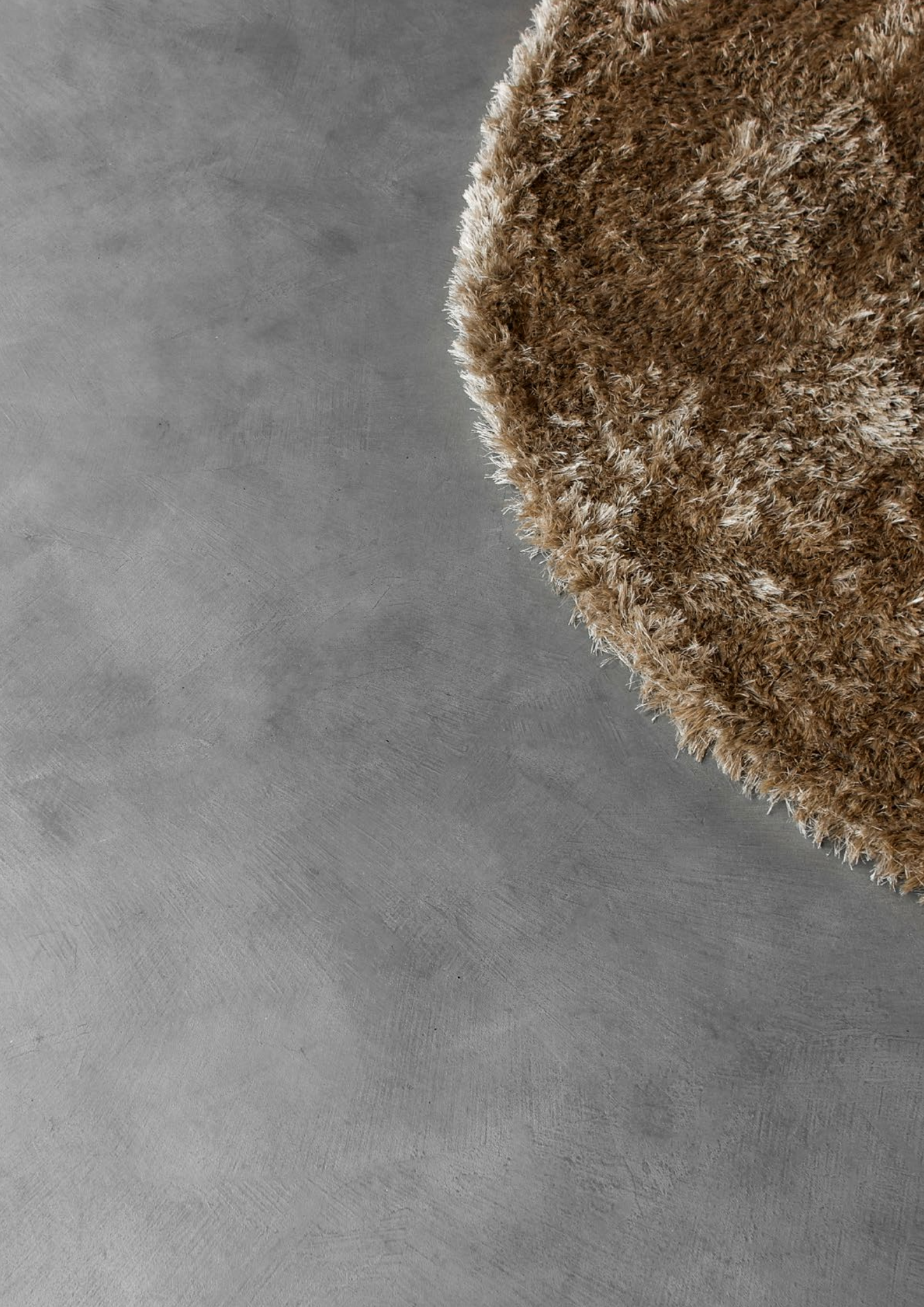
### Precautions

Although Colortek floors have good mechanical resistance, they may be subject as all materials to time related degradation such as scratches, shine loss etc. Fine particles of dust, dirt and loose debris, act as abrasives with traffic unless the floor is cleaned regularly. Elementary precautions should also be taken to properly maintain the floor:

- Provide a doormat at the entrance that can trap dust, sand and abrasive particles.
- Put felt pads under the furniture, especially movable articles like chairs.
- In the event that heavy furniture has to be moved, place woolen cloth at the base of the furniture.
- Before carrying out painting, electrical or plumbing works, protect the floor with woolen blankets and nylon sheets.
- Quickly clean all stagnant spills of aggressive liquids such as wine, oils, vinegar and coffee.

### Disclaimer

- Failure to maintain a cleaning routine can affect the performance of Neocement.
- Please ensure you have read the health and safety data sheet for any cleaner you intend to use.





[www.colortek.eu](http://www.colortek.eu)  
[info@colortek.eu](mailto:info@colortek.eu)



Synergy, Added Value, Continuous Improvement,  
Diversity, Integrity, Social Responsibility.

[www.neocement.com](http://www.neocement.com)